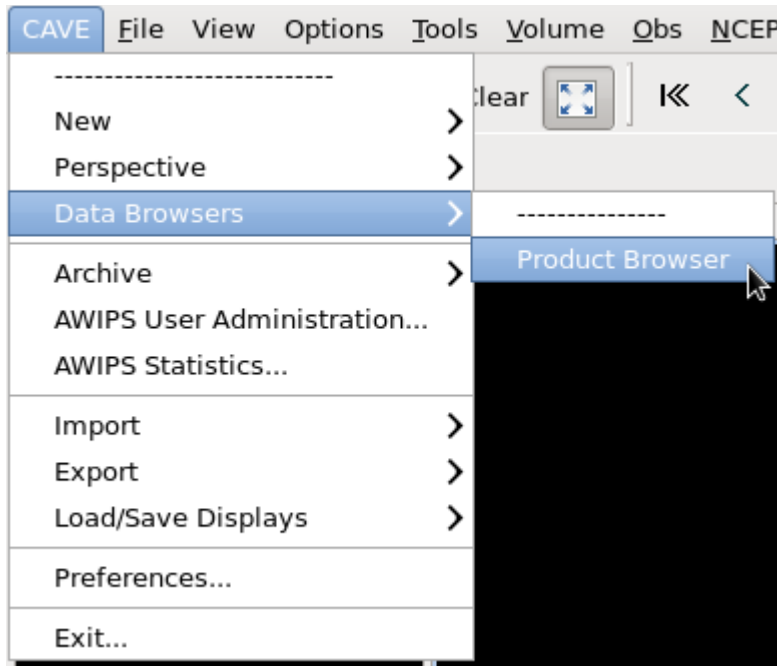


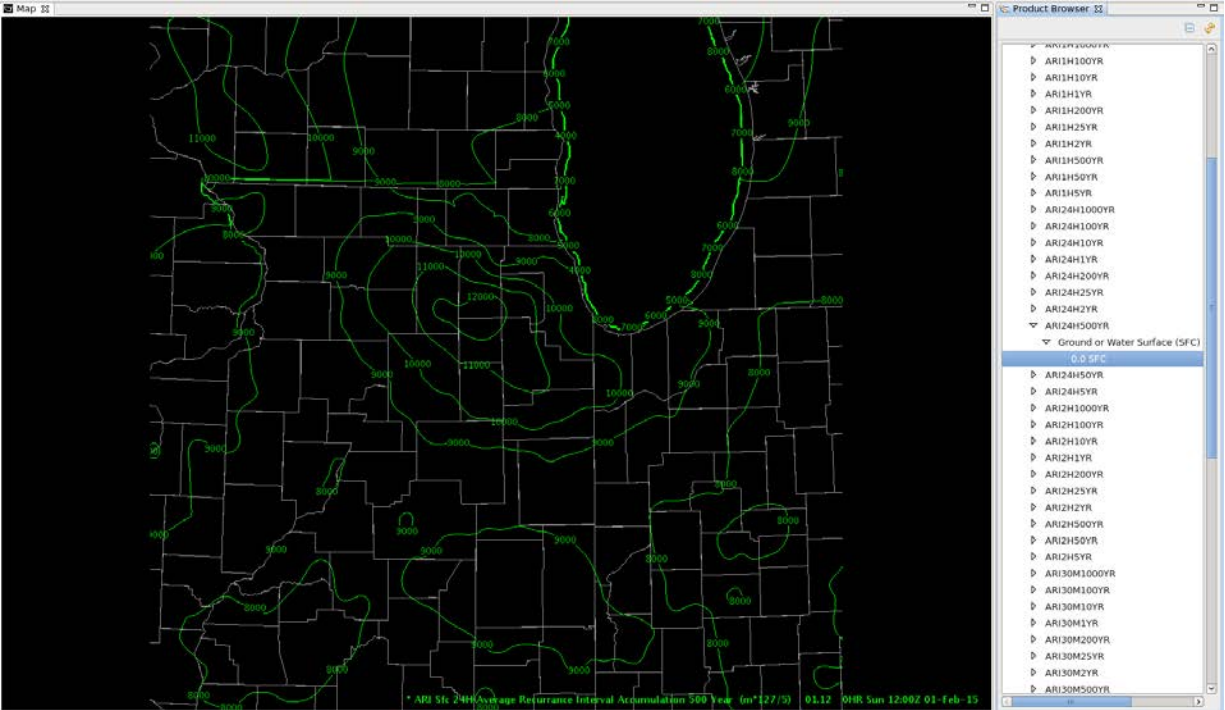
Jobsheet #1: Loading Spatial Plots of ARIs

Loading ARIs from the Product Browser

1. Select **CAVE->Data Browsers->Product Browser** from the **CAVE** menu.

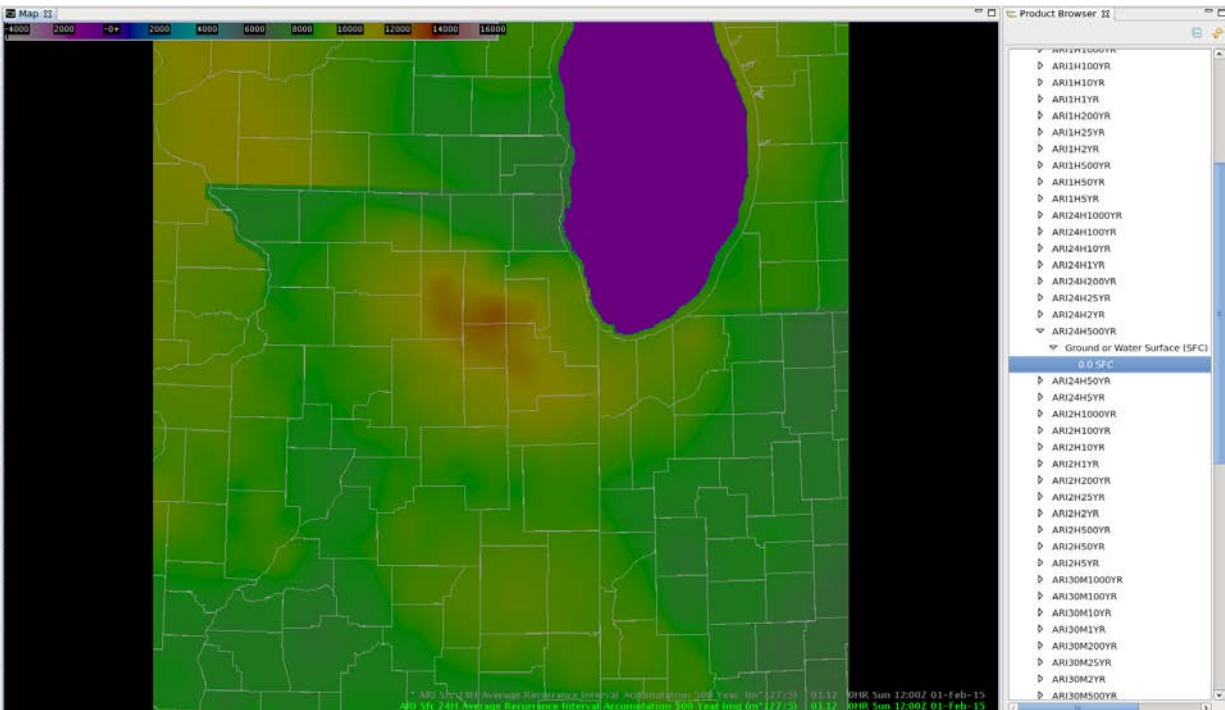


2. Select **Grid->ARI->ARI#H#YR->Ground or Water Surface (SFC)->0.0 SFC** and **double click** on **0.0 SFC** in Product Browser.
 - e.g. Grid-> ARI-> ARI24H500YR-> Ground or Water Surface (SFC)-> 0.0 SFC for 24hr 500 year ARI



3. **Right click and hold** inside **the text legend** in the bottom right part of CAVE and select **Load as Image**.

- Note: ARI imagery loaded through the Product Browser is displayed in thousandths of an inch (10,000 is 10 inches), so divide by 1000 to identify the ARI precipitation in inches.



Loading ARIs from FFMP

1. Select **SCAN-> \$radar -> Guidance -> ARIFFG500 -> FFMP \$radar ARIFFG500 24.0 HR Display**.

- e.g. SCAN-> klot-> Guidance-> ARIFFG500-> FFMP klot ARIFFG500 24.0 HR Display for the 24hr duration 500 year ARI

