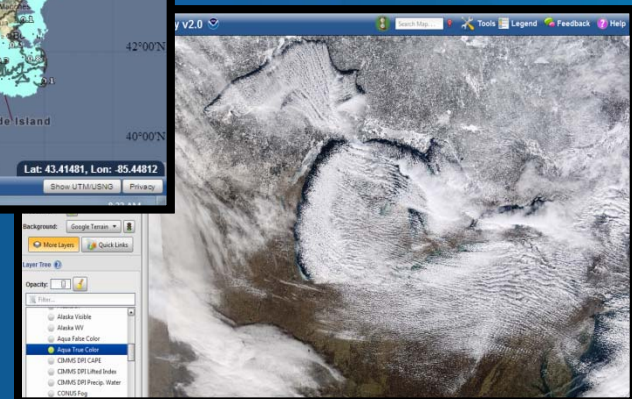
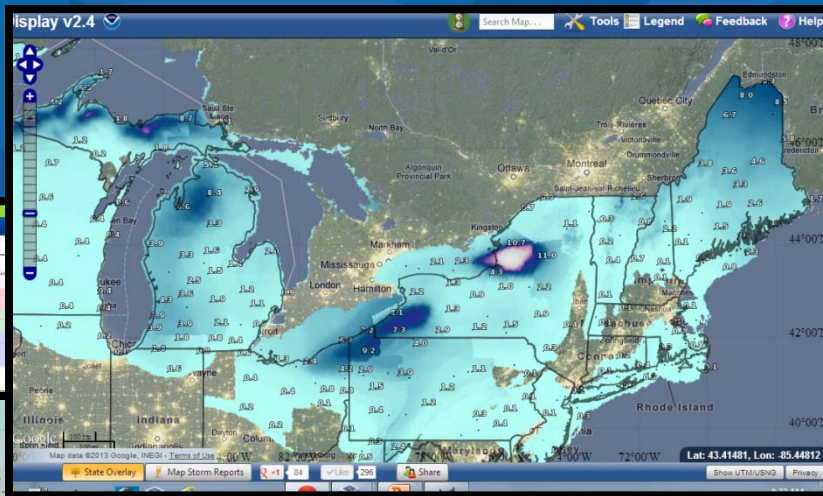




# Meet EDD - Enhanced Data Display

## Introduction and Working with Layers

*Jonathan Wolfe, Chris Leonardi, and Julia Ruthford  
Charleston, WV WRN Pilot Project*





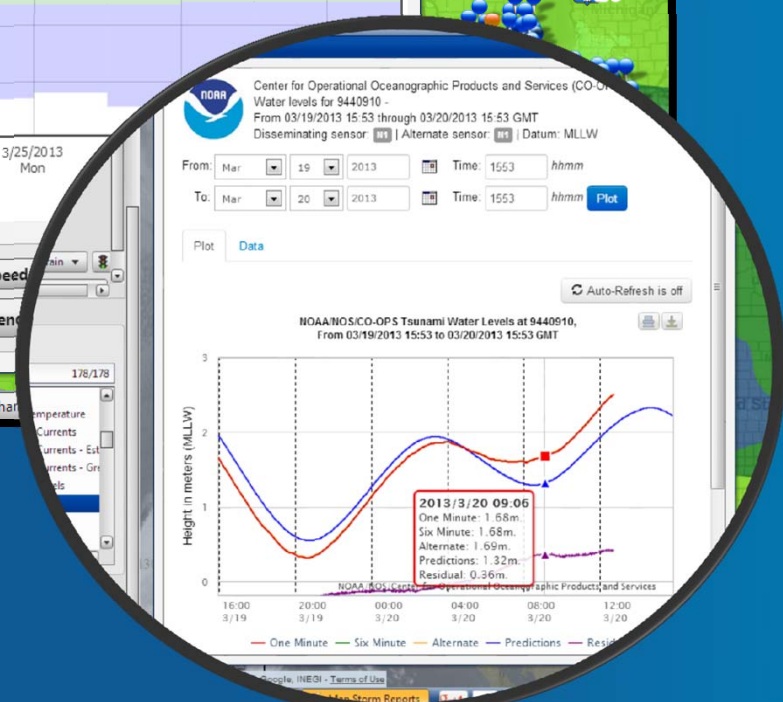
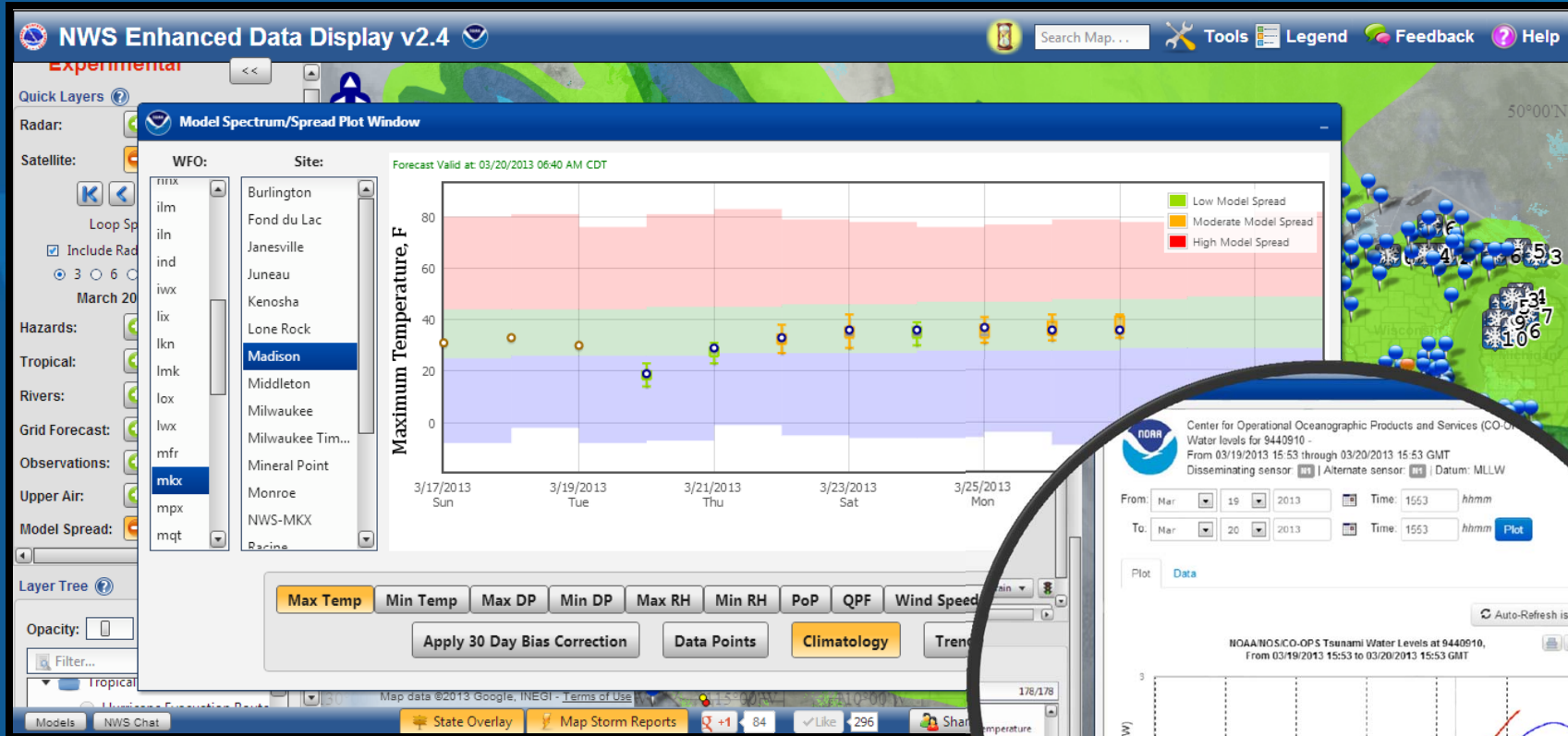
# What is EDD?

The Enhanced Data Display (EDD) is simply a web-based GIS.

- Data layering, querying, and extraction
- Share layers with others that dynamically update with the latest data – shared data is never stale
- Accelerates Research to Operations



# Plugins - Model Spread





# Disclaimer

EDD is an experimental service and is under continuous development

- Bugs and data issues are possible
- Changes, additions, and deletions to the interface and/or features are possible



# Recommendations for using EDD

- Computer: Currently optimized for desktop/laptop (usable on smartphone or tablet)
- Browser: Firefox, Chrome, Safari, IE 10
- Internet speed: *the faster, the better!*
- Screen resolution: *the bigger, the better!*



# Let's meet EDD!

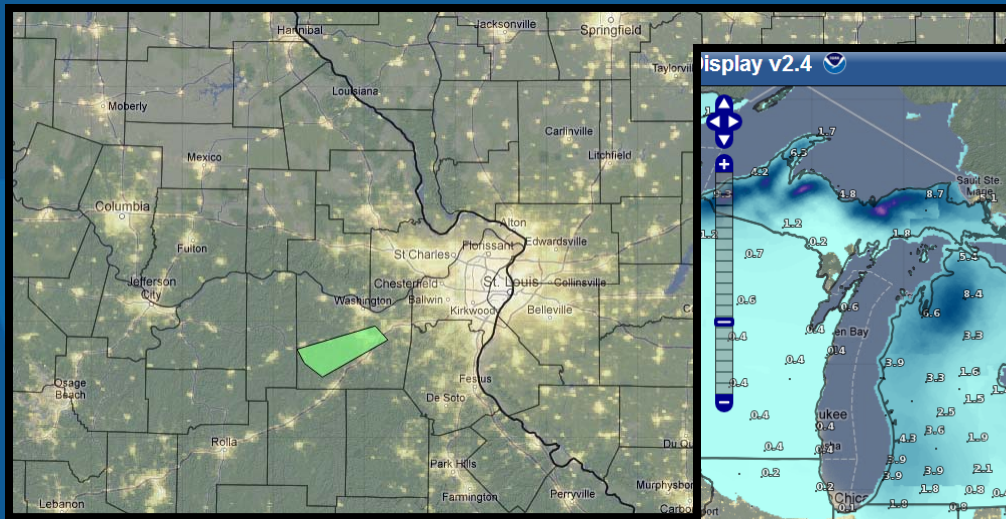
<http://preview.weather.gov/edd>

(public-facing, more stable)

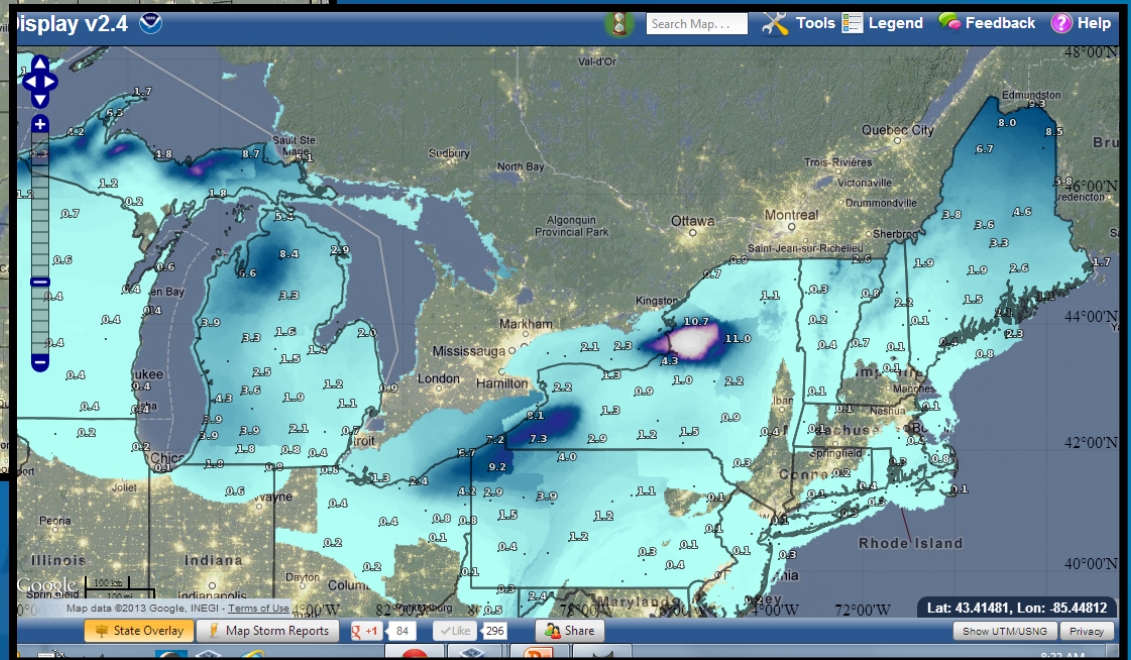
<http://dev.nids.noaa.gov/~jwolfe/mwp/trunk/edd/build/>  
(NWS-only, more unstable, but possibly newer features)



# Screenshots



Instant metrics on population affected by warnings using Night Lights



Storm Total Snowfall

